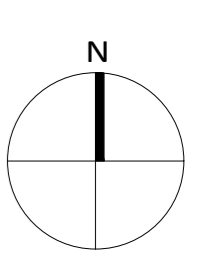
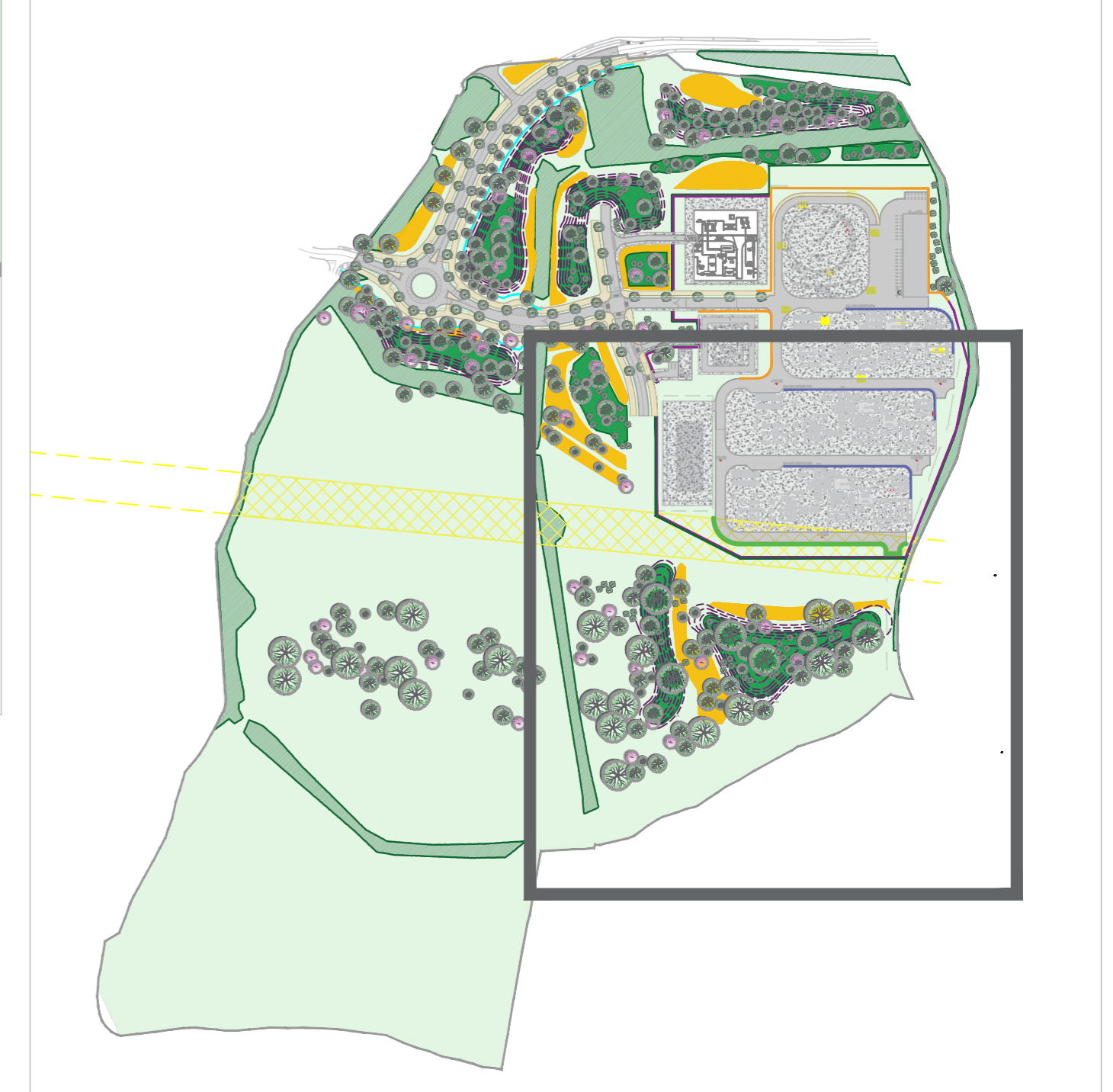


Site Extent - NTS



- Existing Hedges**
To be retained
- SOFT LANDSCAPE**
Proposed Tree Planting
Fagus sylvatica 'Dawyck', Quercus robur, Fagus sylvatica, Aesculus hippocastanum, Pinus sylvestris, Salix alba tristis, Acer pseudoplatanus, Acer platanoides, Prunus avium, Juglans regia
- Amenity Grass - Public Area**
300mm min. Topsoil depth
- Mounding**
- Woodland Meadow Mix**
Species Name
Allium ursinum, Campanula latifolia, Circea lutetiana, Digitalis purpurea, Fragaria vesca, Geranium robertianum, Geum urbanum, Hyacinthoides non-scripta, Hypericum pulchrum, Primula vulgaris, Silene dioica, Silene flos-cuculi, Stachys sylvatica, Teucrium scorodinia, Torilis japonica, Vicia sepium, Viola riviniana.
- Wild Flower Meadow**
An appropriate dry meadow type with wildflowers for these areas would simulate NVC type MGS. Appropriate herbs for this type of meadow include:
Common knapweed (Centaura nigra), Ribwort plantain (Plantago lanceolata), Red clover (Trifolium pratense), Birds-foot trefoil (Lotus corniculatus), Bulbous buttercup (Ranunculus bulbosus), Meadow buttercup (Ranunculus acris), Lady's-bedstraw (Galium verum), Cowslip (Primula veris), Oxeye daisy (Leucanthemum vulgare), Yellow Rattle (Rhinanthus minor), Common sorrel (Rumex acetosa), Burnet saxifrage (Pimpinella saxifraga), Autumn hawkbit (Leontodon autumnalis), Rough hawkbit (Leontodon hispidus)
- H1 - Proposed Native Hedgerow**
450mm topsoil dep/100cm Double Staggered Row
Species Name
Craetagus monogyna, Prunus spinosa, Ilex aquifolium, Rosa canina, Lonicera periclymenum 'Graham Thomas'

LEGEND:

- EXISTING SURFACE WATER SEWER WITH PIPE SIZE, GRADE, MANHOLE REF. AND INVERT LEVEL
- EXISTING FOUL WATER SEWER WITH PIPE SIZE, GRADE, MANHOLE REF. AND INVERT LEVEL
- PROPOSED SURFACE WATER SEWER WITH PIPE SIZE, GRADE, MANHOLE REF. AND INVERT LEVEL
- PROPOSED FOUL WATER SEWER WITH PIPE SIZE, GRADE, MANHOLE REF. AND INVERT LEVEL
- PRIVATE STORM WATER DRAIN WITH INSPECTION CHAMBER INDIVIDUAL
- PRIVATE FOUL WATER DRAIN WITH INSPECTION CHAMBER
- PROPOSED PERFORATED PIPE SURROUNDED IN FILTER STONE WITH ACCESS JUNCTION/ INSPECTION CHAMBER
- PROPOSED FILTER DRAIN WITH ACCESS JUNCTION/ INSPECTION CHAMBER
- PROPOSED GULLY AND CONNECTION
- PROPOSED PERMEABLE PAVING
- PROPOSED DRY DETENTION BASIN WITH 600mm UNDERLYING FILTER STONE

LEGEND:

- APPROVED PLANNING SURFACE WATER PIPE & MANHOLE
- APPROVED PLANNING SURFACE WATER RISING MAN
- APPROVED PLANNING ATTENUATION STORAGE
- PROPOSED SURFACE WATER PIPE & MANHOLE
- PROPOSED FILTER DRAIN
- PROPOSED SWALE WITH PERFORATED PIPE
- PROPOSED KERB INLET

LEGEND:

- PROPOSED GULLY AND CONNECTION
- PROPOSED ATTENUATION STORAGE
- OVERLAND FLOOD ROUTE DIRECTION

Project Title: Kilshane Power Plant SID					Client: Kilshane Energy Ltd.		Dwg No. 05	
Drawing Title: Combined Landscape & Engineers Plan					Scale 1:500		Date 12/06/2025	
Job No. 1961					 Ronan MacDiarmada + Associates Ltd. Landscape Architects and Consultants. Gort Na Si, Main Street, Newcastle, Co. Dublin, D22A314 tel: +353 1 412 4476 e-mail: info@rmda.ie			
REV	DATE	BY	CHECKED	DESCRIPTION	This Drawing is Copyright ©			
D	28/11/2025	MSC	RMD	Draft				
C	21/11/2025	MSC	RMD	Draft				
B	31/07/2025	MSC	RMD	Draft				
A	30/07/2025	MSC	RMD	Draft				
00	12/06/2025	MSC	RMD	Draft				